

# What is required to study at the U.Porto

Academic Year 2018/2019

## Application procedures

Before completing the Application Form, gather all information with the responsible person for the mobility at the Home Institution and organize all personal documents and Transcript of Records, mandatory for submission of the application.

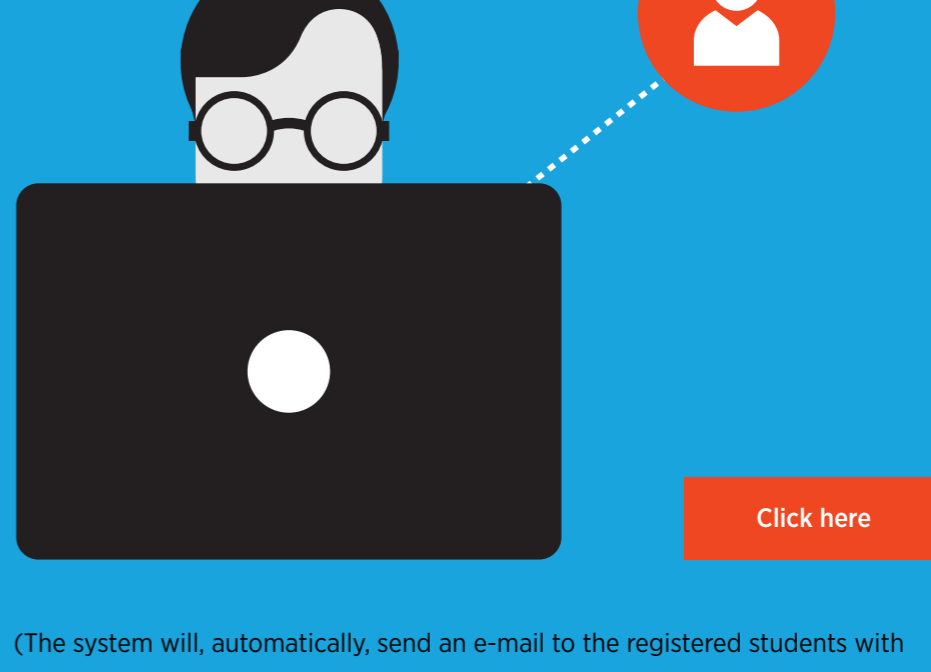
**2. Login to the U.Porto website and create your online Application Form.**

Username

Password

[Click here](#)

**1. Ask for username and password** required to access the Application Form.



(The system will, automatically, send an e-mail to the registered students with a username and password)

**3. Read the online Application Guide.**

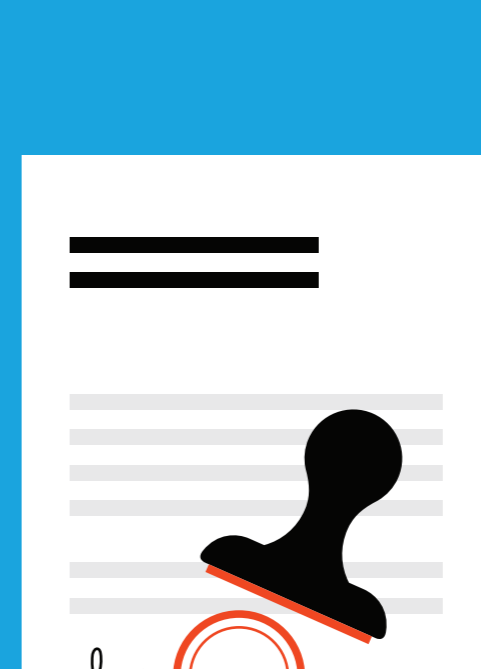
(same page, sidebar on the right)



**4. Submit the online Application Form and print the .pdf file.**



**5. Collect signature and stamp** of mobility coordinator at the Home Institution.



**6. Upload all required documents in ONE .pdf file:**

Application Form duly signed and stamped by your Home Institution, transcript of records, personal documents, etc.



Once all these stages are concluded, the application will be analysed by the University of Porto.

**Good luck!**



Information about:

### Academic Calendar Education Offer ECTS guide

(Credit System applied at the U.Porto)

For additional information, students may also contact directly the Faculty of interest, whose contacts are available in the same page.

## Deadlines for submission of applications

**Full Academic year**



(results during **June**)

**1st Semester**



(results during **June**)

**2nd Semester**



(results during **November**)

## Preparation of the Mobility

Organize your travel and consult the following sections before departing to Porto.

**Academic Calendar**



**Being International at U.Porto**



**Living in Porto**



**"Stories@Porto"**



**NOTE:** Students that, for any reason, cannot attend classes from the first day, should arrive no later than the end of the first week of classes.

## Teaching Language and Portuguese Language Courses

Each course's teaching language is identified in the **Education Offer** of the U.Porto.

Most of the subjects lectured at the University of Porto are taught in Portuguese. Although the U.Porto does not impose any mandatory language requirements to exchange students, each student must check with the Faculty/Department the specific requirements (linguistic and academic) to enable his/her application to the U.Porto.

U.Porto also provides tutorial support in English to students that request for it and whenever possible. Also note that, some teachers may allow students to write assignments and take exams in other languages, namely in English, but this situation can only be agreed upon arrival in each individual case.

**Portuguese Language Courses**

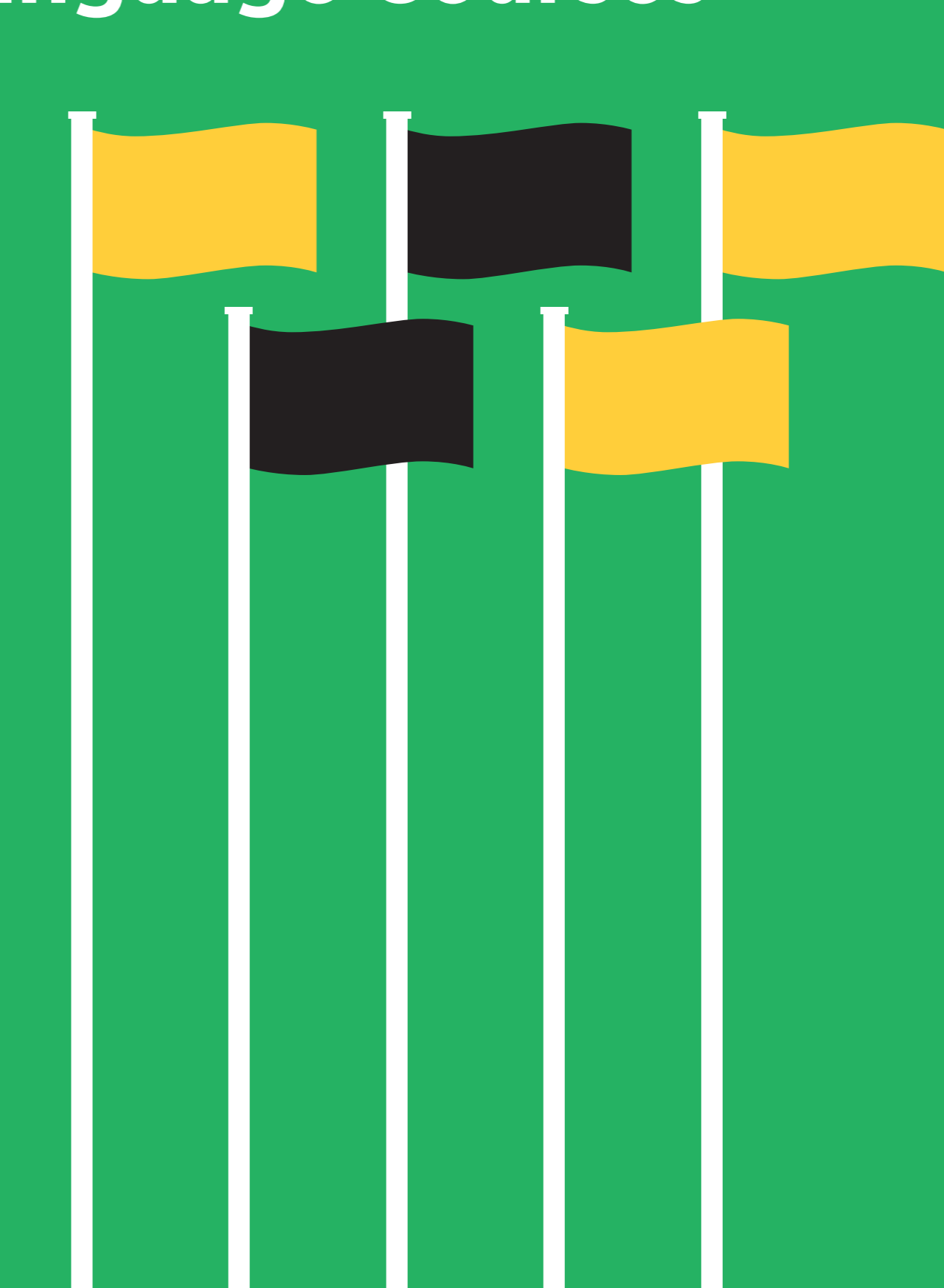
[Learn More](#)

**Other Language Courses**

[Learn More](#)

**Contact our Faculty of Arts:**

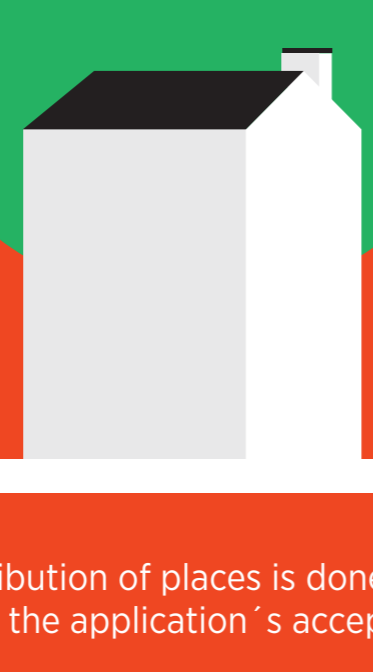
**Ângela Oliveira**  
Gabinete de Português para Estrangeiros  
Faculty of Arts  
T.: +351 226 077 165  
E.: ple@letras.up.pt



## Accommodation

Request for accommodation in the Application Form.

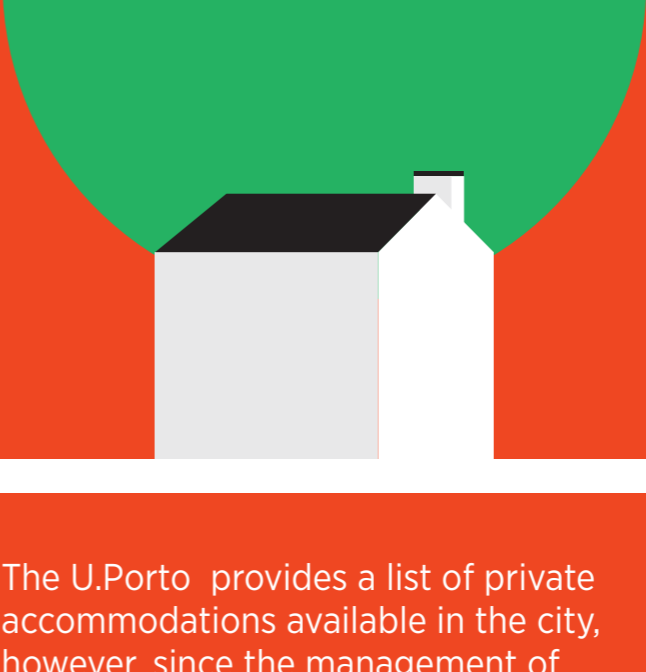
**Halls of Residence**



The attribution of places is done by order of the application's acceptance.

The submission of the request does not guarantee the attribution of a place in the University of Porto Halls of Residence.

**Private Accommodation**



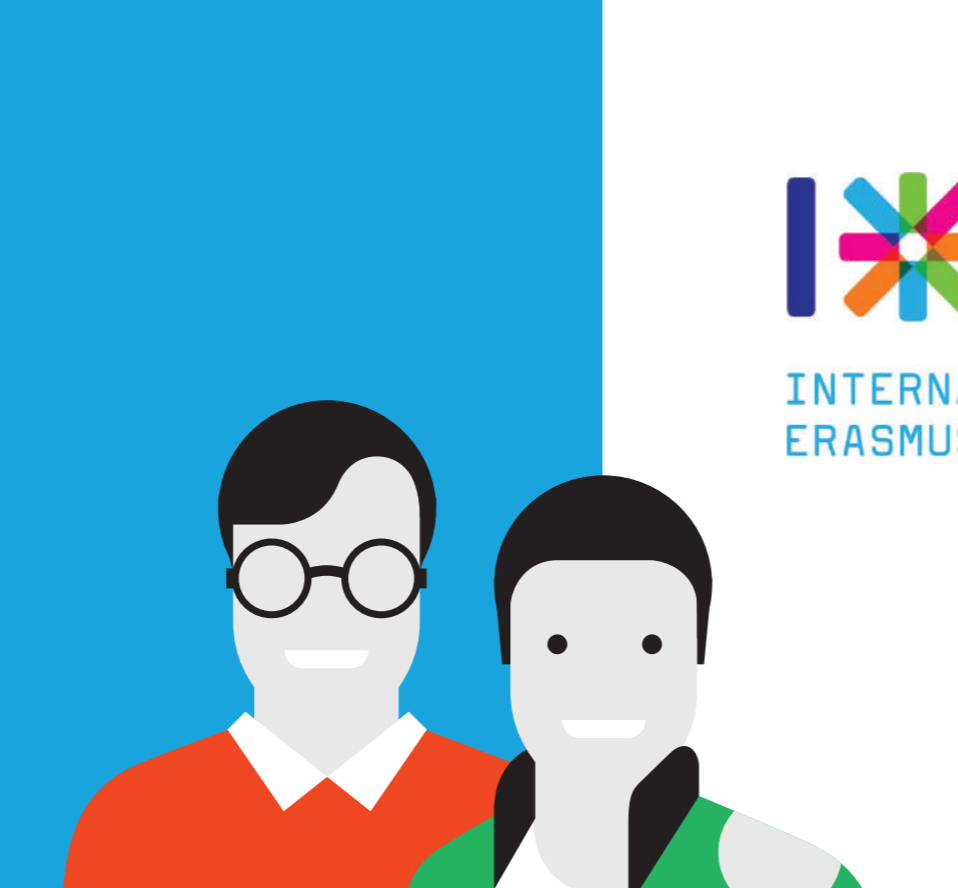
The U.Porto provides a list of private accommodations available in the city, however, since the management of these requests is external to the University, it cannot assume any responsibility in the attribution of this type of accommodation.

To receive the **List of Private Accommodation** please send an e-mail with the request to: [international@reit.up.pt](mailto:international@reit.up.pt).

## ESN Erasmus Student Network

Group of voluntary Portuguese students (ESN-Porto), that helps students in their integration in the U.Porto and city.

**Contacts:**  
[info@esnporto.org](mailto:info@esnporto.org)  
<http://esnporto.org>



INTERNATIONAL EXCHANGE ERASMUS STUDENT NETWORK PORTO

If you wish to get a more personalized support, you may ask for a **Buddy** (Tutor), either by e-mail ([buddy@esnporto.org](mailto:buddy@esnporto.org)) or by accessing the **ESN-Porto** website to get the more information.